



**A leader in integrated
maritime links**



About CLdN

- ◆ CLdN is a leading provider of integrated quay-to-quay, door-to-door and multimodal logistics solutions
- ◆ CLdN ensures reliable, cost-effective transport linking the major economic areas of Europe
- ◆ CLdN offers the lowest CO₂ footprint of all Western European RoRo operators



Our Mission



To excel as an integrated provider
of maritime links



Our vision

How we achieve our mission



Company

CLdN in numbers



Turnover*

€1 bn



People

3,000



Founded

1929

Our solutions

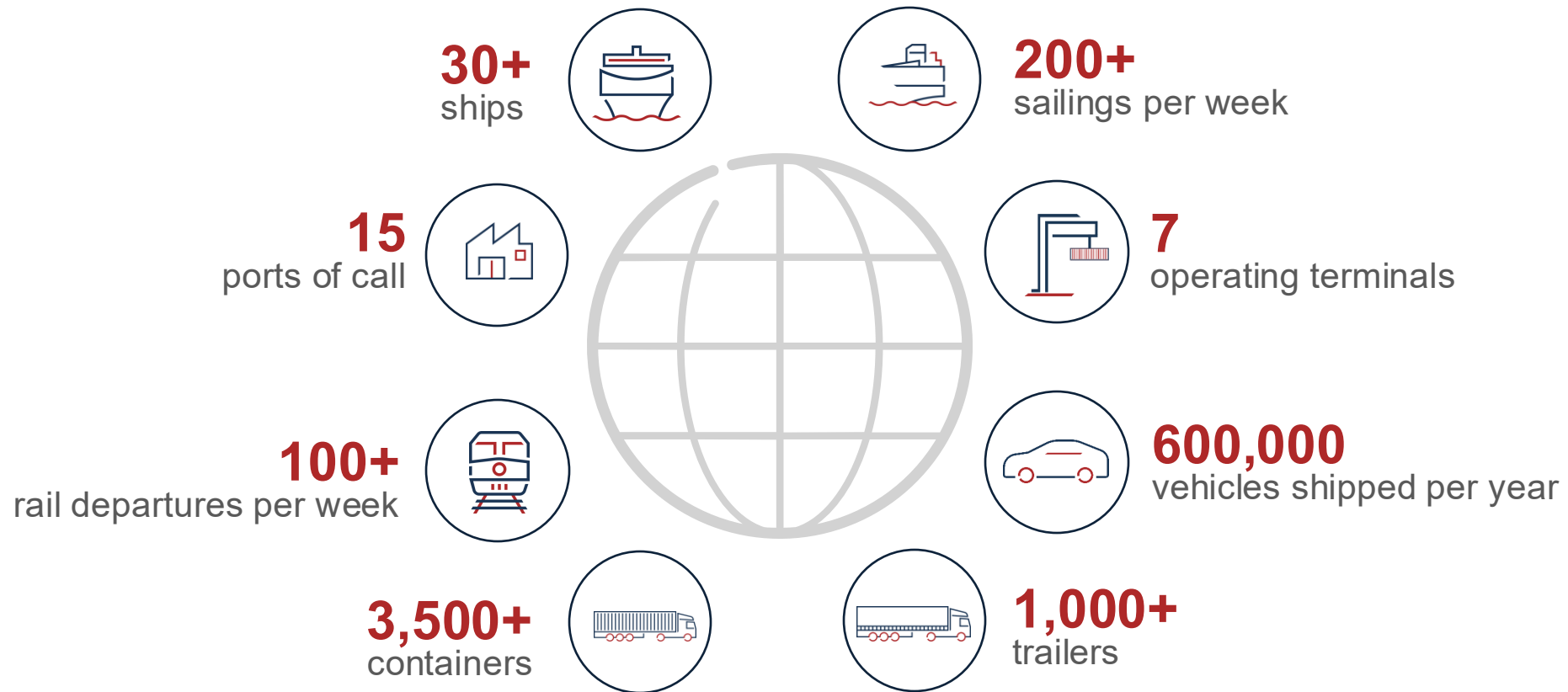
Tailor-made transport solutions

- ◆ Short-sea shipping
- ◆ Multimodal transport
- ◆ Terminal services
- ◆ Automotive logistics



Our solutions

Our offer in numbers



Our integrated transport solutions



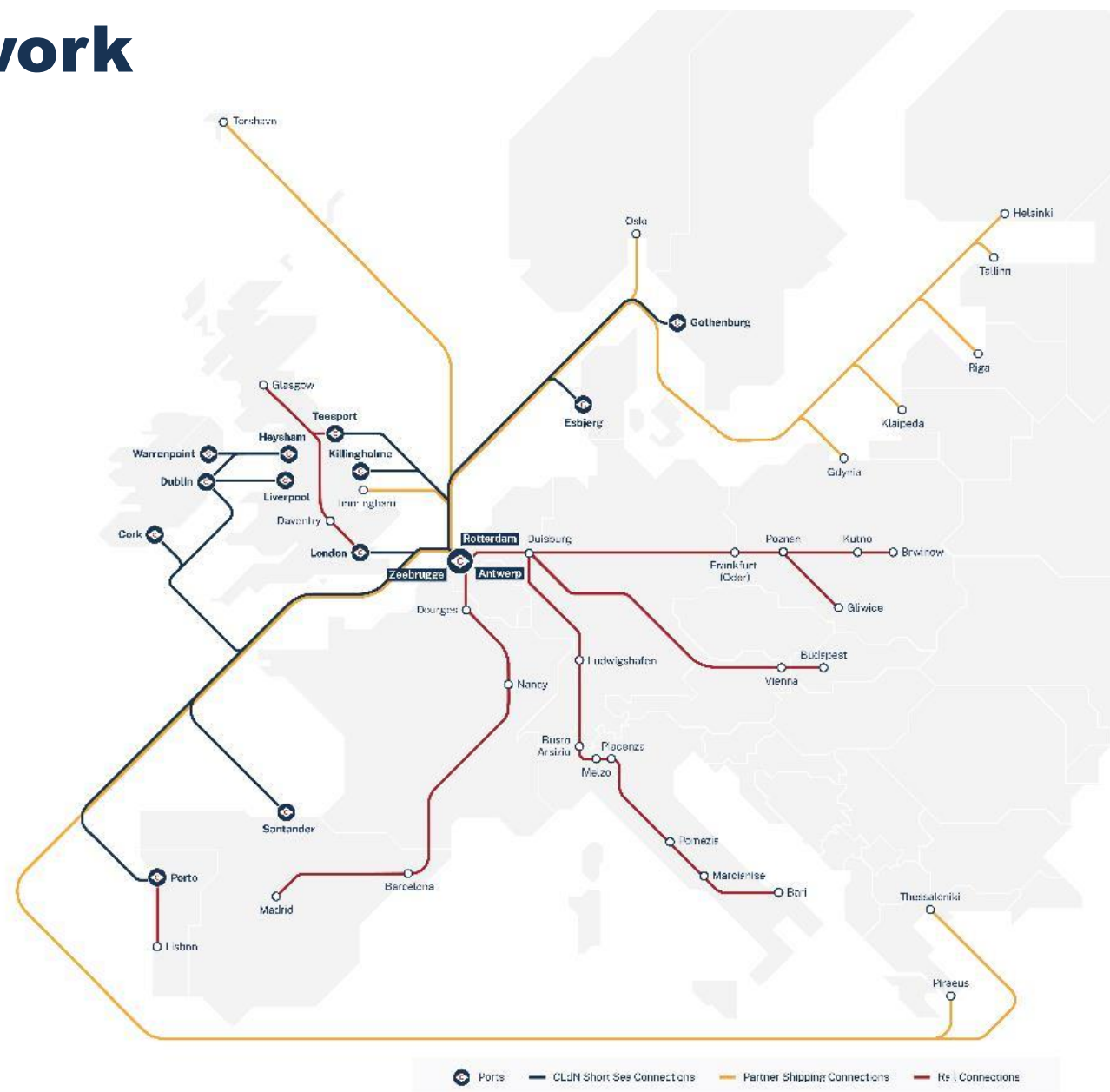
Our shipping network

Connecting Europe



Our multimodal network

Connections through Europe



Our port services



Stevedoring for CLdN



Intermodal facilities: rail, barge



Stevedoring for third party vessels

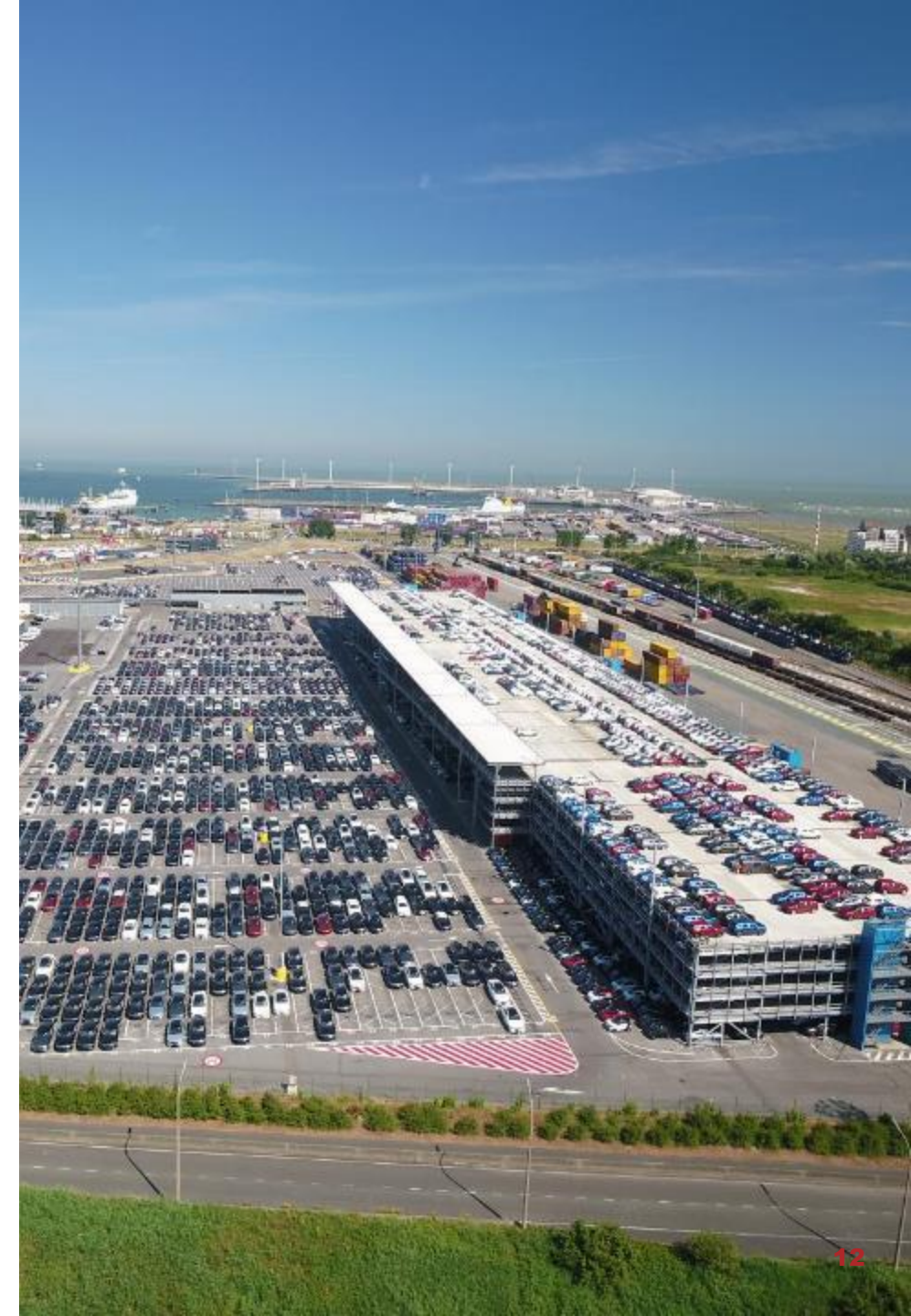


Automotive services

Our automotive services

Full range of automotive logistics services available

- ◆ Handling and storage of new cars, light commercial vehicles, trucks, busses
- ◆ Vehicle preparation centers and PDI at the terminals in Killingholme, Purfleet, Vlissingen, Rotterdam and Zeebrugge
- ◆ Enhancing, modification and repair activities
- ◆ Customizing vehicles to local market requirements



Our people

Working in a dynamic, international environment

- ◆ We employ a team of 3,000 people across Europe
- ◆ We prioritise the safety of all who work with us and invest in our colleagues' well-being and careers
- ◆ We offer a diverse range of roles and responsibilities both at sea and on shore
- ◆ We provide management trainee and apprenticeship opportunities
- ◆ For latest vacancies visit www.cldn.com/careers

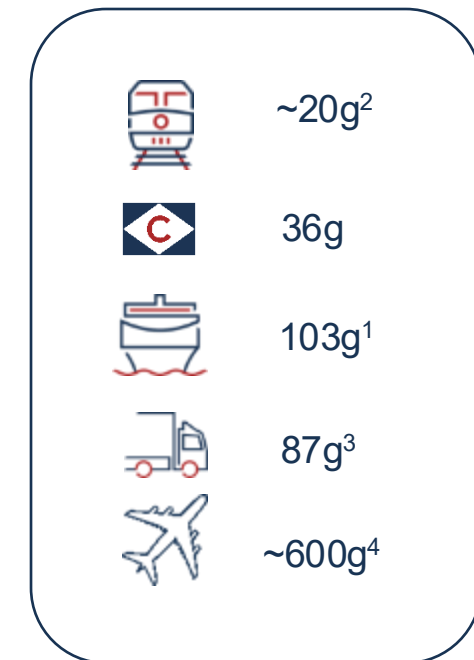


Our corporate responsibility

Leading the way on CO₂ efficiency – RoRo shipping

- ◆ CLdN RoRo is the **top performer** amongst its RoRo shipping peers in Western Europe for CO₂ emissions per tonne of freight carried
- ◆ We achieved a weighted average emission for our fleet of **37g CO₂/tonne-km** in 2024
- ◆ MRV benchmarking showed that we emit **60% less** greenhouse gas per tonne of cargo carried than our peers¹
- ◆ **CLdN's ambition is to further reduce its carbon footprint and to maintain its position as best-performing RoRo operator among its competitors**

Modal emissions g CO₂ / t-km



Our corporate responsibility

Leading the way on CO₂ efficiency – multimodal transport

- ◆ To reduce the environmental impact of our logistics services, we offer solutions using ship, rail, barge and truck
- ◆ By limiting truck transport to the first and last mile of a journey, we help relieve congested roads and decrease CO₂ emissions
- ◆ We continuously map and minimise the number of empty kilometres travelled
- ◆ We actively engage with hauliers on vehicle efficiency and driver training



| | |
|----------------------|-------------------------|
| Lisbon - Poznan | 66% (3.9 tonnes) |
| Verona – Northampton | 73% (2.1 tonnes) |
| Kolding - Salamanca | 52% (2.4 tonnes) |

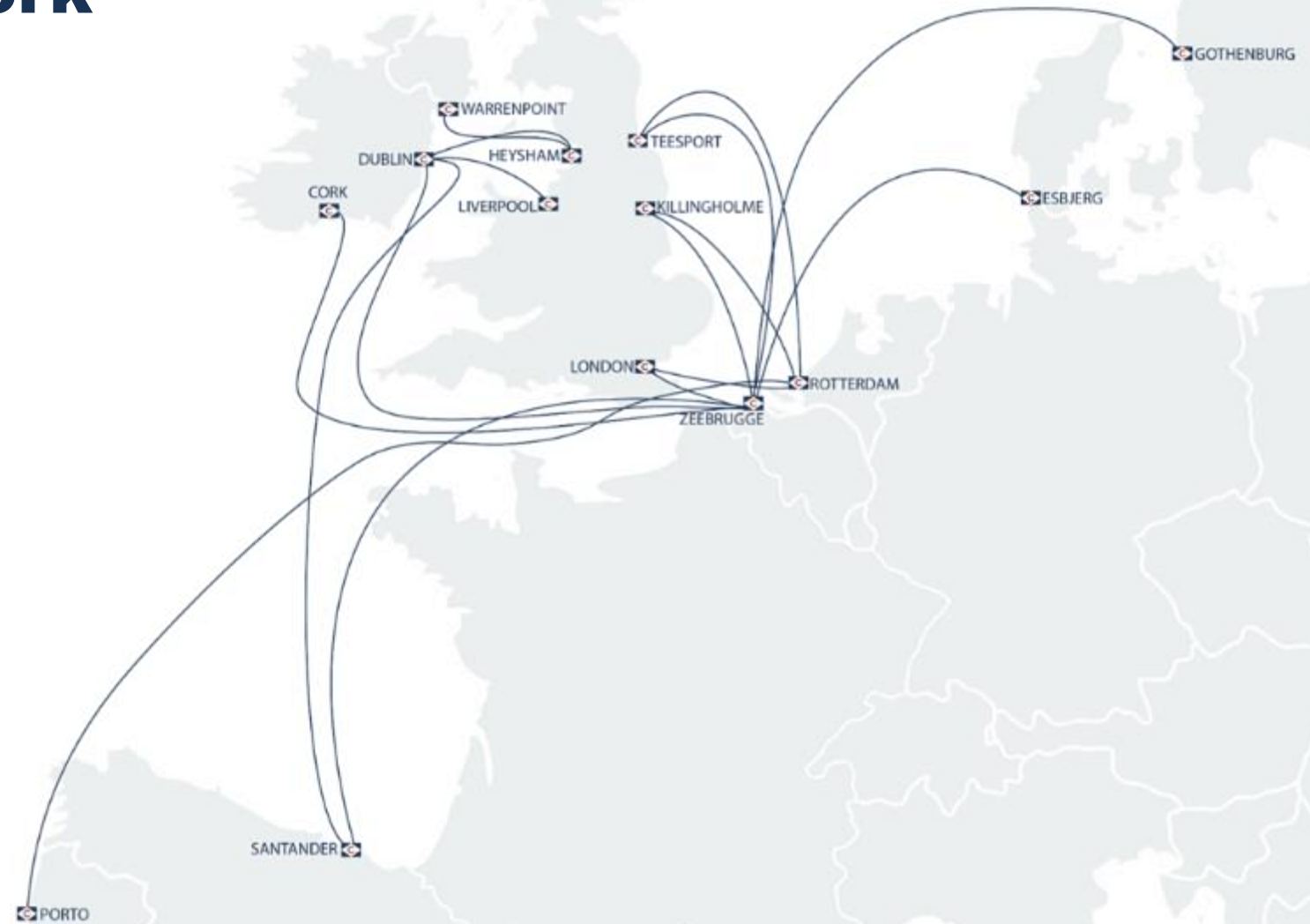


Short-sea shipping



Our shipping network

Connecting Europe



Short-sea services

UK

- ◆ **London**
 - ◆ 1 to 2 sailings daily from/to Zeebrugge
 - ◆ 6 sailings weekly from/to Rotterdam
- ◆ **Killingholme**
 - ◆ 1 sailing daily from/to Zeebrugge
 - ◆ 6 sailings weekly from/to Rotterdam
- ◆ **Teesport**
 - ◆ 3 sailings weekly from/to Zeebrugge
- ◆ **Liverpool**
 - ◆ 2-3 sailings daily from/to Dublin
 - ◆ 1 weekly sailing Santander – Dublin with transshipment to Liverpool
- ◆ **Heysham / Warrenpoint**
 - ◆ 1 sailing daily from Heysham to/from Dublin
 - ◆ 1-2 sailings daily Heysham to/from Warrenpoint



Short-sea services

Scandinavia

◆ Sweden

- ◆ 4 sailings weekly from/to Zeebrugge and Gothenburg

◆ Denmark

- ◆ 2 sailings weekly from/to Zeebrugge and Esbjerg



Short-sea services

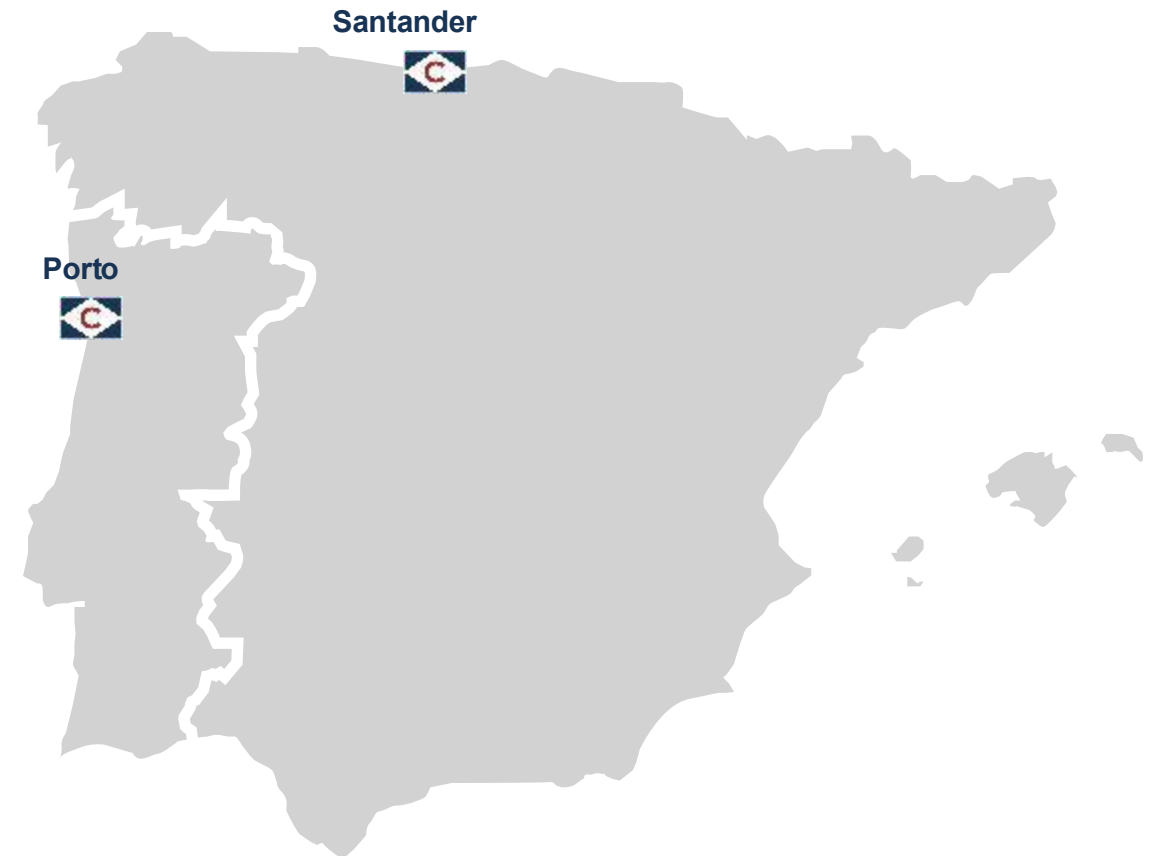
Iberia

◆ Portugal

- ◆ 2 sailings weekly from/to Rotterdam and Zeebrugge to Leixoes

◆ Spain

- ◆ 2 sailings weekly from/to Zeebrugge and Santander
- ◆ 1 sailing weekly from/to Santander – Dublin (with transshipment option to Liverpool)



Short-sea services

Ireland service

- ◆ 6 sailings weekly between Rotterdam and Dublin :
 - ◆ 3 sailings with ro-ro vessel
 - ◆ 3 sailings with lolo vessel
- ◆ 3 sailings weekly between Zeebrugge and Dublin
 - ◆ 2 sailings with ro-ro vessel
 - ◆ 1 sailing with lolo vessel
- ◆ 2 weekly sailings between Zeebrugge and Cork
 - ◆ 1x lolo and 1x ro-ro
- ◆ 1 weekly sailing between Rotterdam and Cork
- ◆ 1 weekly sailing Santander – Dublin
(with transshipment option to Liverpool)



CLdN fleet

Our fleet of 30 vessels includes the largest and most advanced ships

H5



Seraphine, Faustine, Hermine, Laureline,
Sixtine & Ysaline

G9



Delphine & Celine

G9e



Chaumine & Leonine



RoRo vessels

G9e

- ◆ 2 ships in operation
- ◆ Built in 2025
- ◆ Largest RoRo shortsea vessels in the world (together with conventional G9 class)
- ◆ 8,000 lane metres
- ◆ Car deck area of 16,510 m²
- ◆ Net tonnage: 23,304
- ◆ Two conventional main engines as well as two large shaft generators of 6 MW each, which can be used for generating power or for electric propulsion



RoRo vessels

G9

- ◆ 2 ships in operation
- ◆ Built in 2017 & 2018
- ◆ Largest RoRo shortsea vessels in the world
- ◆ 8,000 lane meters
- ◆ Car deck area of 16,510 m²
- ◆ Net tonnage: 22,282



RoRo vessels

H5s

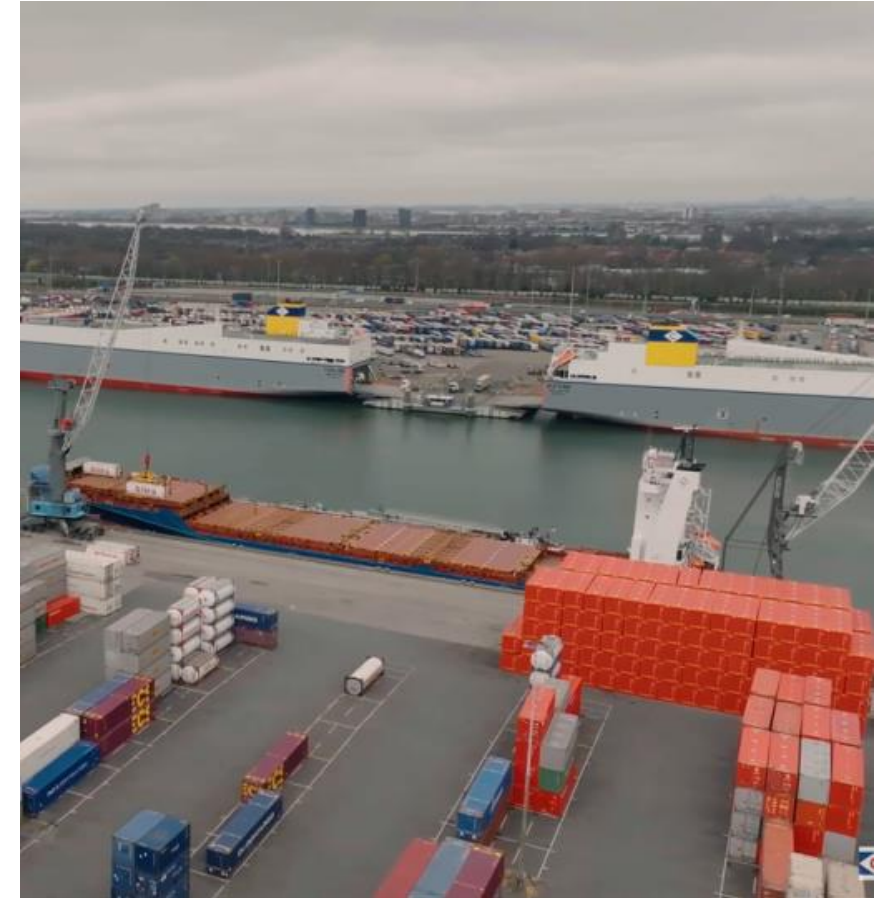
- ◆ 6 ships in operation:
 - Seraphine & Faustine running on LNG
- ◆ 5,000 lane meters
- ◆ Car deck area of 16,510 m²



LoLo vessels

New build programme

- ◆ 4 new LoLo vessels to be built by HD Hyundai Mipo in South Korea
- ◆ Delivery from January 2027
- ◆ Cargo capacity of 1,100 TEU
- ◆ Will complement CLdN's fleet of roll-on / roll-off (RoRo) vessels
- ◆ Outstanding fuel efficiency and an innovative open-top design to allow reduced port handling times





Port terminals

Port terminals

CLdN owns and operates six ports with a range of terminal services

UK



Terminals:

London: 1 (66 ha)

Killingholme: 1 (106 ha)

Liverpool: 1 (11 ha)



Netherlands



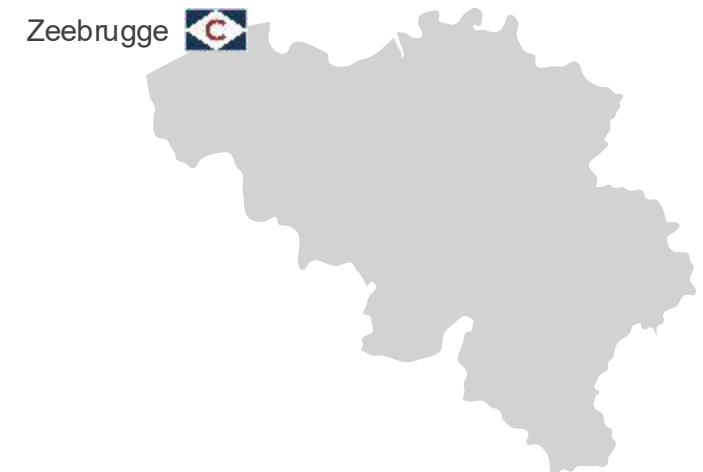
Terminals:

Rotterdam*: 3 (89 ha)

Flushing: 1 (104 ha)



Belgium



Terminals:

Zeebrugge: 3 (158 ha)



Port terminals

Full range of RoRo terminal services

Trailers and containers



Multimodal rail



Automotive - PDI



High & heavy handling



Automotive logistics



Barge and cross-docking



Port terminals

Rail connections to major economic centres

- ◆ **Between Zeebrugge (BE) and**
 - ◆ Novara, Piacenza and Segrate-Milan (IT)
 - ◆ Antwerp (BE)
 - ◆ Ludwigshafen (DE)
- ◆ **Between Rotterdam (NL) and**
 - ◆ Segrate-Milan, Melzo-Milan, Bologna, Pordenone and Montirone (IT)
 - ◆ Vienna (AT)
 - ◆ Duisburg (DE)



Port terminals

Zeebrugge terminals

1. **Albert II-dok** – non-UK services
2. **Brittaniadok**– UK services
3. **Canadakaai** – vehicle hub



Port terminals

Zeebrugge – Albert II-dok (non-UK routes)

- ◆ Newly operational RoRo terminal of 38 hectares
- ◆ Jack-up platform with two connecting pontoons
- ◆ Multimodal rail handling
 - ◆ 5 rail tracks of 750m

Port terminals

Zeebrugge: Brittaniadok (UK routes)

- ◆ 4 RoRo berths
- ◆ 67 hectares
- ◆ Multimodal Rail handling
 - ◆ 6 rail tracks of 600m
 - ◆ 2 rail tracks of 350m
- ◆ Car deck with 4,000 covered spaces
- ◆ Vehicle wash and inspection facilities

Port terminals

Zeebrugge: Canadakaai (automotive hub)

- ◆ 2 deep-sea RoRo berths
- ◆ Rail connected
 - ◆ 4 rail tracks of 375m
- ◆ 23,000 car spaces
- ◆ PDI centre (50% JV)

Port terminals

Rotterdam

- ◆ RoRo berths
 - ◆ 5 short sea
 - ◆ 1 deep sea
 - ◆ 1 barge berth
- ◆ 68 hectares
- ◆ Rail terminal operated with 2 RMG cranes
 - ◆ 5 rail tracks of 750m
 - ◆ 2 rail tracks of 300m
- ◆ 4 multi-storey car decks
- ◆ 22,000 covered storage spaces 8,000 open air storage spaces
- ◆ PDI center

Port terminals

Distriport, Rotterdam

- ◆ Container, breakbulk and high & heavy cargo handling
- ◆ 22ha of adjoining terminal infrastructure
- ◆ All-weather terminal
- ◆ 50.000m² of covered warehouses
- ◆ Rail head



Port terminals

Vlissingen

- ◆ Commissioned in 2003. 104 hectares.
- ◆ 3 berths for short-sea and deep-sea
- ◆ Terminal with 50,000 car spaces
- ◆ PDI centre connected to the terminal
- ◆ Linked to existing rail network
 - ◆ 1 rail track of 700 m
 - ◆ 2 rail tracks of 625m



Port terminals

London (Purfleet)

- ◆ Located on the river Thames and a major gateway for the greater London area
- ◆ 2 lock-free RoRo berths
- ◆ 50 hectares
- ◆ Multimodal rail connections
 - ◆ 2 rail tracks of 330m
 - ◆ 2 rail tracks of 250m
- ◆ 10,000 covered vehicle storage spaces
- ◆ PDI center on site



Port terminals

Killingholme

- ◆ Located on the river Humber – a major gateway for trade connecting the UK with the European mainland
- ◆ 6 lock-free RoRo (deep-sea) berths
- ◆ 106 hectares of adjoining freehold terminal infrastructure
- ◆ 21,000 car spaces
- ◆ PDI center on site



Port terminals

Liverpool

- ◆ Located on the river Mersey in the Port of Liverpool
- ◆ Newly-renovated 11ha terminal (2025)
- ◆ 1 dedicated RoRo berth
- ◆ Main corridor for UK-Irish trade
- ◆ Possibility to handle all trailer types, special cargo and automotive products



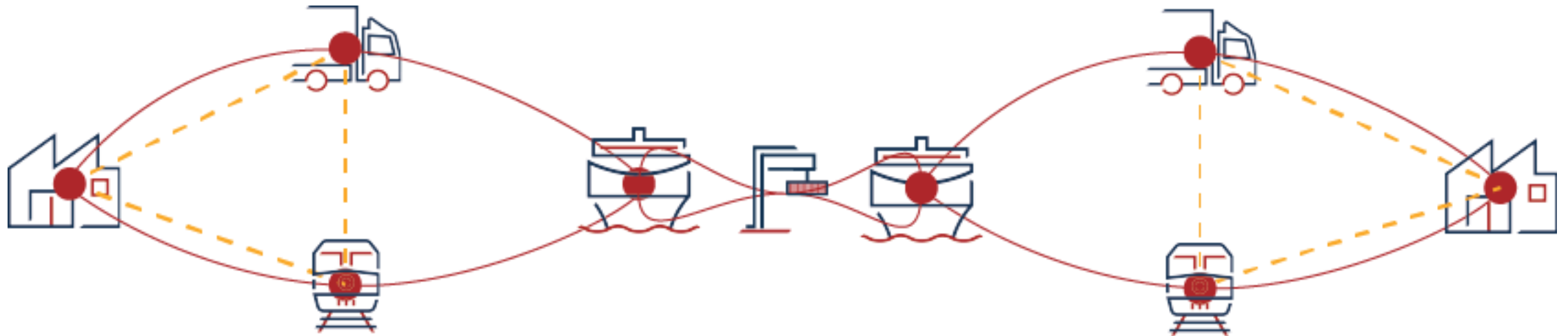


**Multimodal transport
& freight forwarding**

[illegible]

Multimodal transport

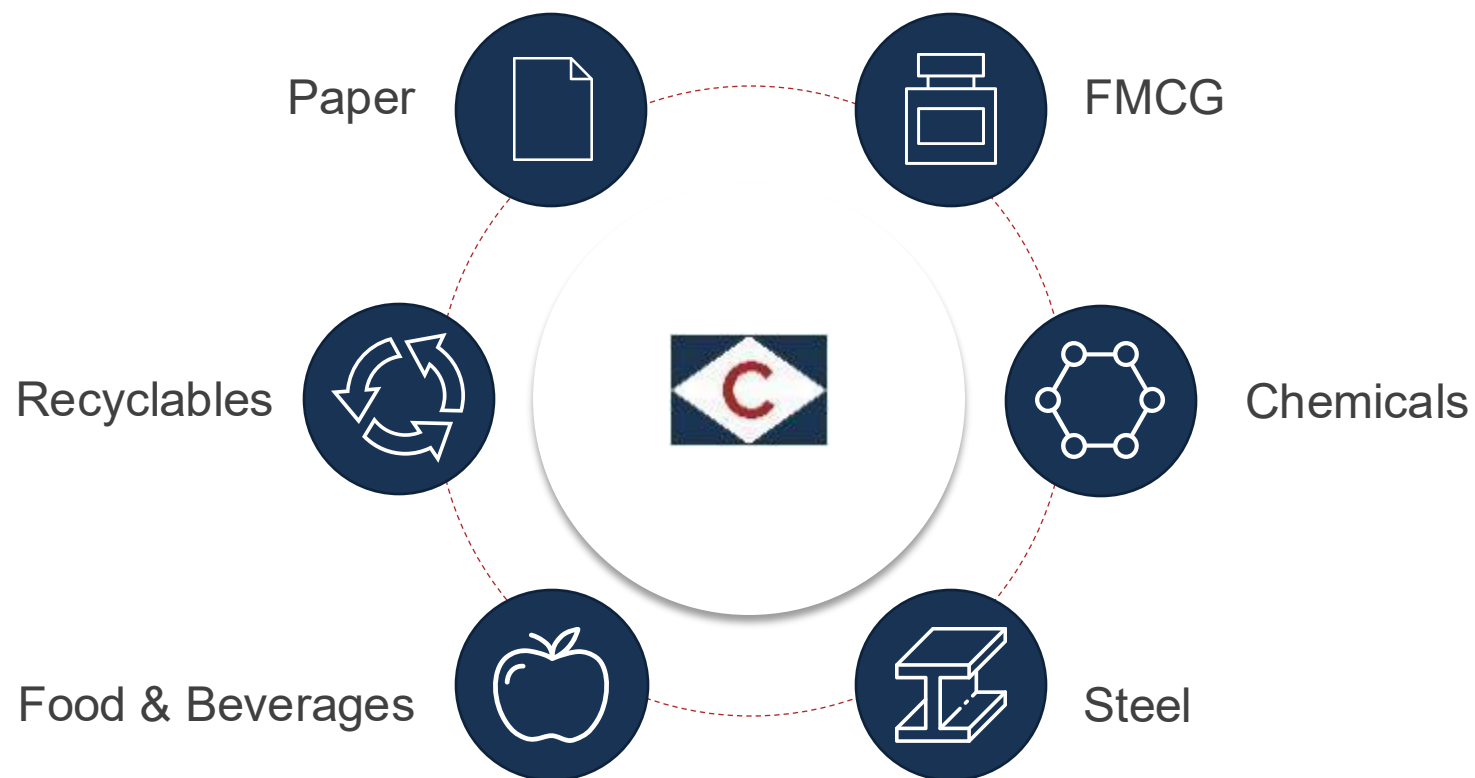
Door-to-door service



First and last mile and/or one stop shop for trailer and container operations and project cargo transport

Multimodal transport

Key markets served



Multimodal transport

Our equipment

TRAILERS



- ◆ Over 1,000 trailers (equipped for intermodal transport)

CONTAINERS



- ◆ Over 3,500 HCPW containers (45ft)

Freight forwarding

Sea, rail and road

- ◆ Door-to-door forwarding in Europe
- ◆ Movement of shipper-owned containers
 - ◆ One stop shop for quality services
 - ◆ Covering our full network
 - ◆ 20ft | 30ft | 40ft | 45ft | flat racks
 - ◆ First and last mile services included
 - ◆ China rail
- ◆ Project cargo within our shipping network
- ◆ Trade lanes Baltic and Poland with own equipment



Fast response time to customer requests



State of the art and certified equipment that meets the highest standards



Flexibility and capacity for every customer

